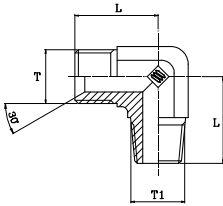


**ADAPTER LIGHT BSP M/BSPT M 90°
ELBOW**

**ADATTATORE LEGGERO 90° BSP
M/BSPT M**

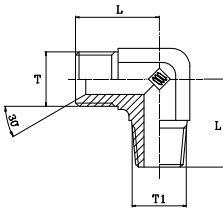


VF90

part nr. codice	thread T	thread T1	L		E		Press. Max	
			[in]	[mm]	[in]	[mm]	[psi]	[bar]
1902001313	1/4-19	1/4-19	1,10	28,0	0,55	14	4351	300
1902001717	3/8-19	3/8-19	1,18	30,0	0,75	19	4351	300
1902002121	1/2-14	1/2-14	1,46	37,0	0,87	22	3626	250
1902002727	3/4-14	3/4-14	1,58	40,0	1,06	27	2901	200
1902003333	1-11	1-11	1,97	50,0	1,30	33	2611	180
1902004242	1.1/4-11	1.1/4-11	2,05	52,0	1,62	41	2175	150

**ADAPTER HEAVY BSP M/BSPT M 90°
ELBOW**

**ADATTATORE PESANTE
90° BSP M/BSPT M**

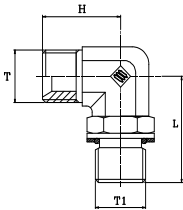


V880

part nr. codice	thread T	thread T1	L		E		Press. Max	
			[in]	[mm]	[in]	[mm]	[psi]	[bar]
1902101010	1/8-28	1/8-28	0,79	20,0	0,47	12	5075	350
1902101313	1/4-19	1/4-19	1,06	27,0	0,55	14	5075	350
1902101717	3/8-19	3/8-19	1,18	30,0	0,75	19	5075	350
1902102121	1/2-14	1/2-14	1,46	37,0	0,87	22	5075	350
1902102727	3/4-14	3/4-14	1,58	40,0	1,18	30	5075	350
1902103333	1-11	1-11	1,97	50,0	1,38	35	4060	280
1902104242	1.1/4-11	1.1/4-11	2,05	52,0	1,77	45	3045	210
1902104848	1.1/2-11	1.1/2-11	2,32	59,0	1,97	50	2030	140

**ADAPTER BSP M/M ADJUSTABLE 90°
ELBOW**

**ADATTATORE 90° BSP M/M
ORIENTABILE**

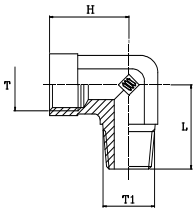


V965

part nr. codice	thread T	thread T1	L		H		E		Press. Max	
			[in]	[mm]	[in]	[mm]	[in]	[mm]	[psi]	[bar]
1909001313	1/4-19	1/4-19	1,26	32,0	1,06	27,0	0,59	15	5075	350
1909001717	3/8-19	3/8-19	1,46	37,0	1,26	32,0	0,79	20	3770	260
1909002121	1/2-14	1/2-14	1,69	43,0	1,46	37,0	0,95	24	3770	260
1909002727	3/4-14	3/4-14	1,93	49,0	1,58	40,0	1,18	30	3770	260
1909003333	1-11	1-11	2,05	52,0	1,97	50,0	1,38	35	3045	210
1909004242	1.1/4-11	1.1/4-11	2,25	57,0	2,05	52,0	1,77	45	2320	160
1909004848	1.1/2-11	1.1/2-11	2,40	61,0	2,32	59,0	1,97	50	1740	120

**ADAPTER BSP FIXED F/BSPT M 90°
ELBOW**

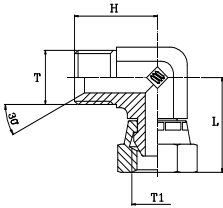
ADATTATORE 90° F FISSA BSP/M BSPT



V920

part nr. codice	thread T	thread T1	L		H		E		Press. Max	
			[in]	[mm]	[in]	[mm]	[in]	[mm]	[psi]	[bar]
1912001010	1/8-28	1/8-28	0,79	20,0	0,67	17,0	0,55	14	5075	350
1912001313	1/4-19	1/4-19	1,10	28,0	0,87	22,0	0,67	17	5075	350
1912001717	3/8-19	3/8-19	1,22	31,0	1,02	26,0	0,87	22	4095	310
1912002121	1/2-14	1/2-14	1,46	37,0	1,22	31,0	1,06	27	3075	210
1912002727	3/4-14	3/4-14	1,58	40,0	1,38	35,0	1,34	34	3075	210
1912003333	1-11	1-11	2,21	56,0	1,73	44,0	1,65	42	2030	140

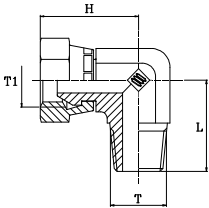
ADAPTER BSP M/SWIVEL F 90° ELBOW ADATTATORE 90° F/M BSP



V950

part nr. codice	thread T	thread T1	L		H		E		Press. Max	
			[in]	[mm]	[in]	[mm]	[in]	[mm]	[psi]	[bar]
1918001313	1/4-19	1/4-19	1,14	29,0	1,06	27,0	0,75	19	5075	350
1918001717	3/8-19	3/8-19	1,34	34,0	1,26	32,0	0,87	22	5075	350
1918002121	1/2-14	1/2-14	1,58	40,0	1,46	37,0	1,06	27	5075	350
1918002727	3/4-14	3/4-14	1,81	46,0	1,58	40,0	1,26	32	4495	310
1918003333	1-11	1-11	2,05	52,0	1,97	50,0	1,50	38	3480	240
1918004242	1-1/4-11	1-1/4-11	2,25	57,0	2,05	52,0	1,97	50	2900	200
1918004848	1-1/2-11	1-1/2-11	2,52	64,0	2,32	59,0	2,17	55	2030	140

ADAPTER BSPT M/ BSP SWIVEL F 90° ELBOW ADATTATORE 90° BSPT M/ FEMMINA BSP

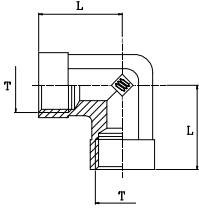


V980

part nr. codice	thread T	thread T1	L		H		E		Press. Max	
			[in]	[mm]	[in]	[mm]	[in]	[mm]	[psi]	[bar]
1919001313	1/4-19	1/4-19	1,14	29,0	1,06	27,0	0,75	19	5075	350
1919001717	3/8-19	3/8-19	1,34	34,0	1,26	32,0	0,87	22	5075	350
1919002121	1/2-14	1/2-14	1,58	40,0	1,42	36,0	1,06	27	5075	350
1919002727	3/4-14	3/4-14	1,81	46,0	1,58	40,0	1,26	32	4495	310
1919003333	1-11	1-11	2,05	52,0	1,97	50,0	1,50	38	3480	240
1919004242	1-1/4-11	1-1/4-11	2,25	57,0	2,05	52,0	1,97	50	2900	200
1919004848	1-1/2-11	1-1/2-11	2,52	64,0	2,32	59,0	2,17	55	2030	140

ADAPTER BSP FIXED F/F 90° ELBOW

ADATTATORE 90° BSP F/F

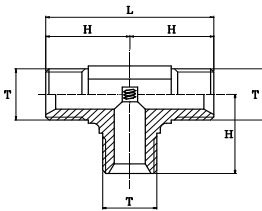


V900

part nr. codice	thread T	L		E		Press. Max	
		[in]	[mm]	[in]	[mm]	[psi]	[bar]
1928001010	1/8-28	0,67	17,0	0,55	14	5075	350
1928001313	1/4-19	0,87	22,0	0,67	17	5075	350
1928001717	3/8-19	1,02	26,0	0,87	22	4495	310
1928002121	1/2-14	1,22	31,0	1,06	27	3045	210
1928002727	3/4-14	1,38	35,0	0,95	24	3045	210
1928003333	1-11	1,73	44,0	1,62	41	2030	140
1928004242	1.1/4-11	2,05	52,0	1,89	48	1450	100

TEE BSP M LIGHT

ADATTATORE T MASCHIO BSP
LEGGERO

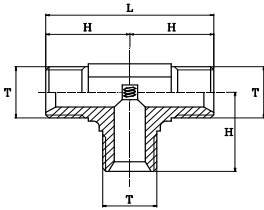


VF92

part nr. codice	thread T	L		H		E		Press. Max	
		[in]	[mm]	[in]	[mm]	[in]	[mm]	[psi]	[bar]
1932131313	1/4-19	2,13	54,0	1,06	27,0	0,55	14	4351	300
1932171717	3/8-19	2,29	58,0	1,14	29,0	0,75	19	4351	300
1932212121	1/2-14	2,76	70,0	1,38	35,0	0,87	22	3626	250
1932272727	3/4-14	3,39	86,0	1,69	43,0	1,06	27	2901	200
1932333333	1-11	3,94	100,0	1,97	50,0	1,30	33	2611	180
1932424242	1.1/4-11	4,33	110,0	2,17	55,0	1,62	41	2175	150

TEE BSP M HEAVY

ADATTATORE T MASCHIO BSP PESANTE

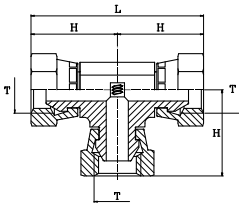


V845

part nr. codice	thread T	L		H		E		Press. Max	
		[in]	[mm]	[in]	[mm]	[in]	[mm]	[psi]	[bar]
1932901010	1/8-28	1,58	40,0	0,79	20,0	0,47	12	5075	350
1932901313	1/4-19	2,13	54,0	1,06	27,0	0,55	14	5075	350
1932901717	3/8-19	2,36	60,0	1,18	30,0	0,75	19	5075	350
1932902121	1/2-14	2,92	74,0	1,46	37,0	0,87	22	5075	350
1932902727	3/4-14	3,15	80,0	1,58	40,0	1,06	27	4495	310
1932903333	1-11	3,94	100,0	1,97	50,0	1,30	33	3770	260
1932904242	1.1/4-11	4,10	104,0	2,05	52,0	1,62	41	2610	180
1932904848	1.1/2-11	4,65	118,0	2,32	59,0	1,89	48	2175	150

TEE BSP SWIVEL F

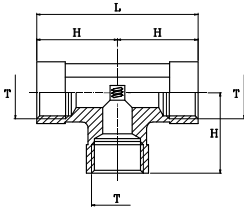
ADATTATORE T FEMMINA BSP GIREVOLE



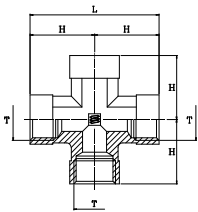
V944

part nr. codice	thread T	L		H		E		Press. Max	
		[in]	[mm]	[in]	[mm]	[in]	[mm]	[psi]	[bar]
*1944131313	1/4-19	2,29	58,0	1,14	29,0	0,55	14	5075	350
*1944171717	3/8-19	2,68	68,0	1,34	34,0	0,75	19	5075	350
*1944212121	1/2-14	3,15	80,0	1,58	40,0	0,87	22	5075	350
*1944272727	3/4-14	3,59	91,0	1,81	46,0	1,06	27	4495	310
*1944333333	1-11	4,10	104,0	2,05	52,0	1,30	33	2900	200

* ON REQUEST / SU RICHIESTA

TEE BSP FIXED F
ADATTATORE T FEMMINA BSP FISSA

V905

part nr. codice	thread T	L		H		E		Press. Max	
		[in]	[mm]	[in]	[mm]	[in]	[mm]	[psi]	[bar]
1946101010	1/8-28	1,34	34,0	0,67	17,0	0,55	14	5075	350
1946131313	1/4-19	1,73	44,0	0,87	22,0	0,67	17	5075	350
1946171717	3/8-19	2,05	52,0	1,02	26,0	0,87	22	3370	260
1946212121	1/2-14	2,44	62,0	1,22	31,0	1,06	27	3045	210
1946272727	3/4-14	2,76	70,0	1,38	35,0	0,95	24	3045	210
1946333333	1-11	3,47	88,0	1,73	44,0	1,62	41	2030	140
1946424242	1.1/4-11	3,94	100,0	1,97	50,0	1,89	48	1450	100

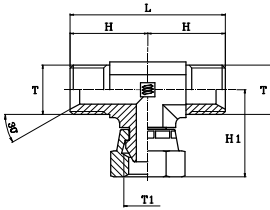
CROSS BSP FIXED F
ADATTATORE CROCE FEMMINA BSP FISSA

V910

part nr. codice	thread T	L		H		E		Press. Max	
		[in]	[mm]	[in]	[mm]	[in]	[mm]	[psi]	[bar]
*1956000010	1/8-28	1,34	34,0	0,67	17,0	0,55	14	5075	350
*1956000013	1/4-19	1,73	44,0	0,87	22,0	0,67	17	5075	350
*1956000017	3/8-19	2,05	52,0	1,02	26,0	0,87	22	3625	250
*1956000021	1/2-14	2,44	62,0	1,22	31,0	1,06	27	2900	200
*1956000027	3/4-14	2,76	70,0	1,38	35,0	1,30	33	2755	190

* ON REQUEST / SU RICHIESTA

TEE BSP M/SWIVEL F/M

ADATTATORE T M/F GIREVOLE/M BSP



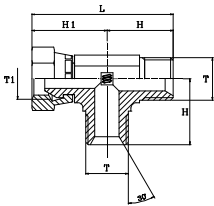
V960

part nr. codice	thread T	thread T1	L		H		H1		E		Press. Max	
			[in]	[mm]	[in]	[mm]	[in]	[mm]	[in]	[mm]	[psi]	[bar]
*1940131313	1/4-19	1/4-19	2,13	54,0	1,06	27,0	1,14	29,0	0,75	19	5075	350
*1940171717	3/8-19	3/8-19	2,48	63,0	1,26	32,0	1,34	34,0	0,87	22	5075	350
*1940212121	1/2-14	1/2-14	2,92	74,0	1,46	37,0	1,58	40,0	1,06	27	4495	310
*1940272727	3/4-14	3/4-14	3,15	80,0	1,58	40,0	1,81	46,0	1,26	32	3480	240
*1940333333	1-11	1-11	3,94	100,0	1,97	50,0	2,05	52,0	1,50	38	2900	200
*1940424242	1.1/4-11	1.1/4-11	4,10	104,0	2,05	52,0	2,25	57,0	1,97	50	2900	200
*1940484848	1.1/2-11	1.1/2-11	4,73	120,0	2,36	60,0	2,40	61,0	2,17	55	2030	140

* ON REQUEST / SU RICHIESTA

TEE BSP SWIVEL F/M/M

ADATTATORE T F GIREVOLE/M/M BSP



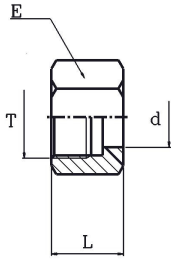
V955

part nr. codice	thread T	thread T1	L		H		H1		E		Press. Max	
			[in]	[mm]	[in]	[mm]	[in]	[mm]	[in]	[mm]	[psi]	[bar]
*1941131313	1/4-19	1/4-19	2,29	58,0	1,06	27,0	1,22	31,0	0,75	19	5075	350
*1941171717	3/8-19	3/8-19	2,60	66,0	1,26	32,0	1,34	34,0	0,87	22	5075	350
*1941212121	1/2-14	1/2-14	3,03	77,0	1,46	37,0	1,58	40,0	1,06	27	5075	350
*1941272727	3/4-14	3/4-14	3,39	86,0	1,58	40,0	1,81	46,0	1,26	32	4495	310
*1941333333	1-11	1-11	4,02	102,0	1,97	50,0	2,05	52,0	1,50	38	3480	240
*1941424242	1.1/4-11	1.1/4-11	4,29	109,0	2,05	52,0	2,25	57,0	1,97	50	2900	200
*1941484848	1.1/2-11	1.1/2-11	4,73	120,0	2,32	59,0	2,40	61,0	2,17	55	2030	140

* ON REQUEST / SU RICHIESTA

JIC NUT FOR METRIC PIPE

DADO JIC PER TUBI METRICI

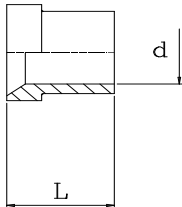


V110

part nr. codice	thread T	d		L		E		Press. Max	
		[in]	[mm]	[in]	[mm]	[in]	[mm]	[psi]	[bar]
2711011000	7/16-20	0,24	6,0	0,61	15,5	0,55	14	5511	380
2711012000	1/2-20	0,32	8,0	0,67	17,0	0,63	16	5511	380
2711014000	9/16-18	0,39	10,0	0,73	18,5	0,67	17	5511	380
2711019000	3/4-16	0,47	12,0	0,85	21,5	0,87	22	4931	340
2711022140	7/8-14	0,55	14,0	0,97	24,5	1,06	27	4061	280
2711022150	7/8-14	0,59	15,0	0,97	24,5	1,06	27	4061	280
2711022160	7/8-14	0,63	16,0	0,97	24,5	1,06	27	4061	280
2711027180	1.1/16-12	0,71	18,0	1,02	26,0	1,26	32	4061	280
2711027200	1.1/16-12	0,79	20,0	1,02	26,0	1,26	32	4061	280
2711033000	1.5/16-12	0,99	25,0	1,12	28,5	1,50	38	2756	190
2711041000	1.5/8-12	1,18	30,0	1,22	31,0	1,97	50	2756	190
2711041320	1.5/8-12	1,26	32,0	1,22	31,0	1,97	50	2611	180
2711048000	1.7/8-12	1,50	38,0	1,42	36,0	2,25	57	2611	180

SLEEVE FOR METRIC PIPE

BUSSOLA PER TUBI METRICI

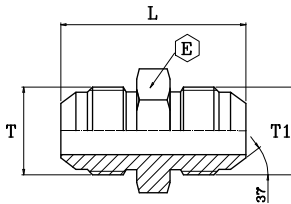


V120

part nr. codice	thread T	d		L		Press. Max	
		[in]	[mm]	[in]	[mm]	[psi]	[bar]
2712011000	7/16-20	0,24	6,0	0,41	10,5	5511	380
2712012000	1/2-20	0,32	8,0	0,45	11,5	5511	380
2712014000	9/16-18	0,39	10,0	0,49	12,5	5511	380
2712019000	3/4-16	0,47	12,0	0,57	14,5	4931	340
2712022140	7/8-14	0,55	14,0	0,65	16,5	4061	280
2712022150	7/8-14	0,59	15,0	0,65	16,5	4061	280
2712022160	7/8-14	0,63	16,0	0,65	16,5	4061	280
2712027180	1.1/16-12	0,71	18,0	0,67	17,0	4061	280
2712027200	1.1/16-12	0,79	20,0	0,67	17,0	4061	280
2712033000	1.5/16-12	0,99	25,0	0,77	19,5	2756	190
2712041000	1.5/8-12	1,18	30,0	0,91	23,0	2756	190
2712041320	1.5/8-12	1,26	32,0	0,91	23,0	2611	180
2712048000	1.7/8-12	1,50	38,0	1,12	28,5	2611	180

JIC NIPLES

NIPLES JIC

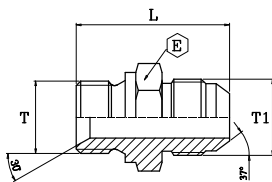


V260

part nr. codice	thread T	thread T1	L		E		Press. Max	
			[in]	[mm]	[in]	[mm]	[psi]	[bar]
2726011000	7/16-20	7/16-20	1,36	34,5	0,47	12	5075	350
2726012000	1/2-20	1/2-20	1,36	34,5	0,55	14	5075	350
2726014000	9/16-18	9/16-18	1,40	35,5	0,59	15	5075	350
2726019000	3/4-16	3/4-16	1,62	41,0	0,75	19	5075	350
2726022000	7/8-14	7/8-14	1,87	47,5	0,95	24	5075	350
2726027000	1.1/16-12	1.1/16-12	2,17	55,0	1,06	27	5075	350
2726033000	1.5/16-12	1.5/16-12	2,21	56,2	1,34	34	4060	280
2726041000	1.5/8-12	1.5/8-12	2,38	60,3	1,65	42	3045	210
2726048000	1.7/8-12	1.7/8-12	2,74	69,5	1,97	50	2030	140

BSP/JIC NIPLES

NIPLES BSP/JIC

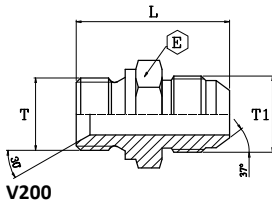


RMGJ

part nr. codice	thread T	thread T1	L		E		Press. Max	
			[in]	[mm]	[in]	[mm]	[psi]	[bar]
2712413110	1/4-19	7/16-20	1,34	34,0	0,75	19	5075	350
2712413140	1/4-19	9/16-18	1,34	34,0	0,75	19	5075	350
2712417190	3/8-19	3/4-16	1,51	38,2	0,87	22	5075	350
2712421190	1/2-14	3/4-16	1,64	41,7	1,06	27	5075	350
2712421220	1/2-14	7/8-14	1,75	44,3	1,06	27	5075	350
2712423270	5/8-14	1.1/16-12	1,91	48,4	1,10	28	4060	280
2712427270	3/4-14	1.1/16-12	1,97	50,0	1,26	32	4060	280
2712433330	1-11	1.5/16-12	2,09	53,1	1,62	41	4060	280
2712442410	1.1/4-11	1.5/8-12	2,30	58,3	1,97	50	3045	210

NPTF/JIC NIPLES

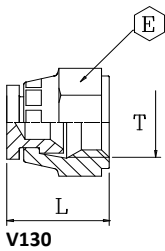
NIPLES NPTF/JIC



part nr. codice	thread T	thread T1	L		E		Press. Max	
			[in]	[mm]	[in]	[mm]	[psi]	[bar]
2720010110	1/8-27	7/16-20	1,22	31,0	0,47	12	5075	350
2720013110	1/4-18	7/16-20	1,40	35,5	0,59	15	5075	350
2720013120	1/4-18	1/2-20	1,40	35,5	0,59	15	5075	350
2720013140	1/4-18	9/16-18	1,42	36,0	0,63	16	5075	350
2720017140	3/8-18	9/16-18	1,42	36,0	0,79	20	5075	350
2720017190	3/8-18	3/4-16	1,54	39,0	0,79	20	5075	350
2720021220	1/2-14	7/8-14	1,89	48,0	0,95	24	5075	350
2720027270	3/4-14	1.1/16-12	2,07	52,5	1,10	28	5075	350
2720033330	1-11.1/2	1.5/16-12	2,30	58,5	1,42	36	4060	280
2720042410	1.1/4-11.1/2	1.5/8-12	2,44	62,0	1,81	46	4060	280

JIC SWIVEL FEMALE PLUG

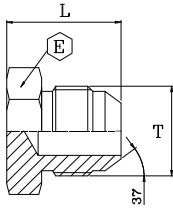
TAPPO FEMMINA GIREVOLE JIC



part nr. codice	thread T	[in]	L		[in]	E	[mm]	Press. Max	
			[in]	[mm]				[psi]	[bar]
2713051111	7/16-20	0,71	18,0	0,55	14	5075	350		
2713051212	1/2-20	0,79	20,0	0,67	17	5075	350		
2713051414	9/16-18	0,87	22,0	0,75	19	5075	350		
2713051919	3/4-16	0,95	24,0	0,95	24	5075	350		
2713052222	7/8-14	1,06	27,0	1,06	27	4061	280		
2713052727	1.1/16-12	1,18	30,0	1,26	32	4061	280		
2713053333	1.5/16-12	1,24	31,5	1,62	41	2756	190		
2713054141	1.5/8-12	1,30	33,0	1,97	50	2611	180		
2713054848	1.7/8-12	1,54	39,0	2,17	55	2611	180		

JIC MALE PLUG

TAPPO MASCHIO JIC

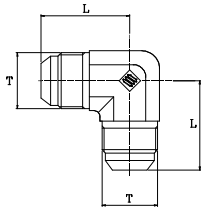


TMJ

part nr. codice	thread T	L		E		Press. Max	
		[in]	[mm]	[in]	[mm]	[psi]	[bar]
2714011000	7/16-20	0,87	22,0	0,47	12	5075	350
2714012000	1/2-20	0,85	21,5	0,55	14	5075	350
2714014000	9/16-18	0,85	21,6	0,59	15	5075	350
2714019000	3/4-16	0,95	24,2	0,75	19	5075	350
2714022000	7/8-14	1,10	28,0	0,95	24	5075	350
2714027000	1.1/16-12	1,28	32,5	1,06	27	5075	350
2714033000	1.5/16-12	1,34	34,0	1,34	34	4060	280
2714041000	1.5/8-12	1,42	36,0	1,65	42	3045	210
2714048000	1.7/8-12	1,65	42,0	1,97	50	2030	140

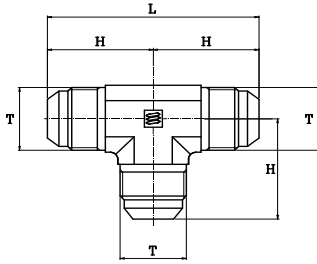
JIC MALE 90° ELBOW

ADATTATORE 90° JIC

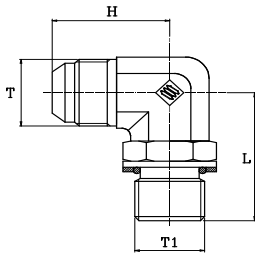


V500

part nr. codice	thread T	L		E		Press. Max	
		[in]	[mm]	[in]	[mm]	[psi]	[bar]
2750011000	7/16-20	0,89	22,5	0,47	12	5075	350
2750012000	1/2-20	0,95	24,0	0,47	12	5075	350
2750014000	9/16-18	1,06	27,0	0,55	14	5075	350
2750019000	3/4-16	1,24	31,5	0,75	19	5075	350
2750022000	7/8-14	1,44	36,5	0,87	22	5075	350
2750027000	1.1/16-12	1,65	42,0	1,06	27	5075	350
2750033000	1.5/16-12	1,81	46,0	1,30	33	4060	280
2750041000	1.5/8-12	2,05	52,0	1,62	41	3045	210
2750048000	1.7/8-12	2,32	59,0	1,89	48	2030	140

JIC MALE TEE
ADATTATORE T JIC

V505

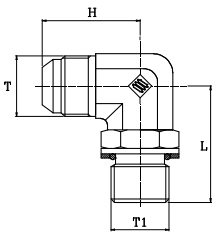
part nr. codice	thread T	L		H		E		Press. Max	
		[in]	[mm]	[in]	[mm]	[in]	[mm]	[psi]	[bar]
2750511000	7/16-20	1,77	45,0	0,89	22,5	0,47	12	5511	380
2750512000	1/2-20	1,89	48,0	0,95	24,0	0,47	12	5511	380
2750514000	9/16-18	2,13	54,0	1,06	27,0	0,55	14	5511	380
2750519000	3/4-16	2,48	63,0	1,24	31,5	0,75	19	5511	380
2750522000	7/8-14	2,88	73,0	1,44	36,5	0,87	22	4931	340
2750527000	1.1/16-12	3,31	84,0	1,65	42,0	1,06	27	4061	280
2750533000	1.5/16-12	3,62	92,0	1,81	46,0	1,30	33	2756	190
2750541000	1.5/8-12	4,10	104,0	2,05	52,0	1,62	41	2756	190
2750548000	1.7/8-12	4,65	118,0	2,32	59,0	1,89	48	2611	180

**ADAPTER ADJUSTABLE M/M JIC 90°
ELBOW**
ADATTATORE 90° ORIENTABILE M/M JIC

V575

part nr. codice	thread T	thread T1	L		H		E		Press. Max	
			[in]	[mm]	[in]	[mm]	[in]	[mm]	[psi]	[bar]
2757511000	7/16-20	7/16-20	1,02	26,0	0,89	22,5	0,59	15	5511	380
2757512000	1/2-20	1/2-20	1,08	27,5	0,95	24,0	0,67	17	5511	380
2757514000	9/16-18	9/16-18	1,24	31,5	1,06	27,0	0,75	19	5511	380
2757519000	3/4-16	3/4-16	1,44	36,5	1,24	31,5	0,95	24	5511	380
2757522000	7/8-14	7/8-14	1,69	43,0	1,44	36,5	1,06	27	4931	340
2757527000	1.1/16-12	1.1/16-12	1,93	49,0	1,65	42,0	1,26	32	4061	280
2757533000	1.5/16-12	1.5/16-12	2,05	52,0	1,81	46,0	1,62	41	2756	190
2757541000	1.5/8-12	1.5/8-12	2,25	57,0	2,05	52,0	1,97	50	2756	190
2757548000	1.7/8-12	1.7/8-12	2,40	61,0	2,32	59,0	2,36	60	2611	180

ADAPTER ADJUSTABLE JIC M/ BSP M
90° ELBOW

ADATTATORE 90° ORIENTABILE JIC M/
BSP M

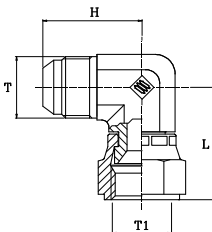


V600

part nr. codice	thread T	thread T1	L		H		E		Press. Max	
			[in]	[mm]	[in]	[mm]	[in]	[mm]	[psi]	[bar]
2760013110	7/16-20	1/4-19	1,02	26,0	0,89	22,5	0,75	19	5075	350
2760013120	1/2-20	1/4-19	1,24	31,5	1,06	27,0	0,75	19	5075	350
2760013140	9/16-18	1/4-19	1,24	31,5	1,06	27,0	0,75	19	5075	350
2760017140	9/16-18	3/8-19	1,44	36,5	1,12	28,5	0,87	22	5075	350
2760013190	3/4-16	1/4-19	1,32	33,5	1,24	31,5	0,75	19	5075	350
2760017190	3/4-16	3/8-19	1,42	36,0	1,24	31,5	0,87	22	5075	350
2760021190	3/4-16	1/2-14	1,69	43,0	1,34	34,0	1,06	27	5075	350
2760021220	7/8-14	1/2-14	1,69	43,0	1,44	36,5	1,06	27	5075	350
2760027270	1.1/16-12	3/4-14	1,93	49,0	1,65	42,0	1,26	32	3625	250
2760027330	1.5/16-12	3/4-14	1,81	46,0	2,05	52,0	1,26	32	3625	250
2760033330	1.5/16-12	1-11	2,05	52,0	1,81	46,0	1,62	41	3625	250
2760042410	1.5/8-12	1.1/4-11	2,25	57,0	2,05	52,0	1,97	50	2320	160
2760048480	1.7/8-12	1.1/2-11	2,40	61,0	2,32	59,0	2,36	60	2030	140

ADAPTER JIC M/ SWIVEL F 90° ELBOW

ADATTATORE 90° M/F GIREVOLE JIC



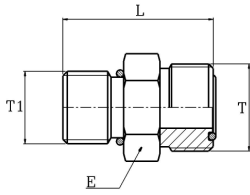
V675

part nr. codice	thread T	thread T1	L		H		E		Press. Max	
			[in]	[mm]	[in]	[mm]	[in]	[mm]	[psi]	[bar]
*2767511000	7/16-20	7/16-20	1,02	26,0	0,89	22,5	0,59	15	5075	350
*2767512000	1/2-20	1/2-20	1,12	28,5	0,95	24,0	0,67	17	5075	350
*2767514000	9/16-18	9/16-18	1,18	30,0	1,06	27,0	0,75	19	5075	350
*2767519000	3/4-16	3/4-16	1,40	35,5	1,24	31,5	0,95	24	5075	350
*2767522000	7/8-14	7/8-14	1,65	42,0	1,44	36,5	1,06	27	5075	350
*2767527000	1.1/16-12	1.1/16-12	1,75	44,5	1,65	42,0	1,26	32	5075	350
*2767533000	1.5/16-12	1.5/16-12	1,97	50,0	1,81	46,0	1,50	38	4060	280
*2767541000	1.5/8-12	1.5/8-12	2,32	59,0	2,07	52,5	1,97	50	3045	210
*2767548000	1.7/8-12	1.7/8-12	2,58	65,5	2,32	59,0	2,36	60	2030	140

* ON REQUEST / SU RICHIESTA

STRAIGHT UNIONS M ORFS / M UNF

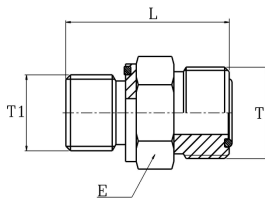
RACCORDO DIRITTO M ORFS / M UNF


VRK2090

part nr. codice	thread T	thread T1	L		E		Press. Max	
			[in]	[mm]	[in]	[mm]	[psi]	[bar]
2820900611	9/16-18	7/16-20	0,09	28,7	0,67	17	4019	840
2820901014	11/16-16	9/16-18	1,26	32	0,75	19	4019	840
2820901219	13/16-16	3/4-16	1,43	36,5	0,86	22	4019	840
2820901622	1-14	7/8-14	1,70	43	1,06	27	7685	530
2820902027	1-3/16-12	1-1/16-12	1,99	50,5	1,26	32	7685	530
2820902533	1-7/16-12	1-5/16-12	1,99	50,5	1,47	38	7685	530
2820903241	1-11/16-12	1-5/8-12	2,06	52,5	1,81	46	4785	330
2820903848	2-12	1-7/8-12	2,34	59,5	2,16	55	4785	330

STRAIGHT UNIONS M ORFS / M BSPP

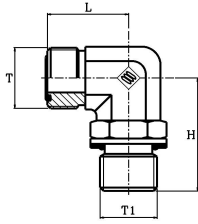
RACCORDO DIRITTO M ORFS / M BSPP


VKR 2100

part nr. codice	thread T	thread T1	L		E		Press. Max	
			[in]	[mm]	[in]	[mm]	[psi]	[bar]
2821000613	9/16-18	1/4-19	1,21	30,5	0,79	19	4019	840
2821001017	11/16-16	3/8-16	1,30	33	0,86	22	4019	840
2821001221	13/16-16	1/2-14	1,51	38,5	1,06	27	4019	840
2821001621	1-14	1/2-14	1,61	41	1,06	27	7685	530
2821002026	1-3/16-12	3/4-14	1,81	46	1,26	32	7685	530
2821002533	1-7/16-12	1-11	1,97	50	1,61	41	7685	530
2821003242	1-11/16-12	1-1/4-11	2,12	54	1,96	50	4785	330
2821003818	2-12	1-1/2-11	2,26	57,5	2,16	55	4785	330

**ADAPTER ADJUSTABLE 90° ELBOW M
ORFS / M UNF**

**ADATTATORE 90° ORIENTABILE M
ORFS / M UNF**

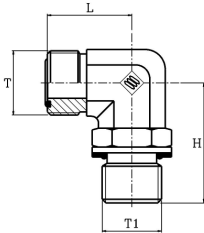


VRK 2540

part nr. codice	thread T	thread T1	H		L		E		Press. Max	
			[in]	[mm]	[in]	[mm]	[in]	[mm]	[psi]	[bar]
2825400611	9/16-18	7/16-20	0,84	21,5	1,30	33	0,55	14	7685	530
2825401014	11/16-16	3/8-19	0,98	25	1,45	36,8	0,75	19	7685	530
2825401219	13/16-16	1/2-14	1,10	28	1,60	40,6	0,75	19	7685	530
2825401622	1-14	3/4-14	1,32	33,5	1,97	50	1,06	27	7685	530
2825402027	1-3/16-12	1-1/16-12	1,51	38,5	2,17	55,1	1,18	30	7685	530
2825402533	1-7/16-12	1-5/16-12	1,63	41,5	2,35	59,7	1,41	36	7685	530
2825403242	1-11/16-12	1-5/8-12	1,75	44,5	2,45	62,3	1,61	41	4785	330
2825403848	2-12	1-7/8-12	1,93	49	2,60	66	1,89	48	4785	330

**ADAPTER ADJUSTABLE 90° ELBOW M
ORFS / M BSPP**

**ADATTATORE 90° ORIENTABILE M
ORFS / M BSPP**



VRK 2550

part nr. codice	thread T	thread T1	H		L		E		Press. Max	
			[in]	[mm]	[in]	[mm]	[in]	[mm]	[psi]	[bar]
2825500613	9/16-18	1/4	0,92	23,5	1,32	33,5	0,55	14	5800	400
2825501017	11/16-16	3/8	1,04	26,5	1,49	38	0,75	19	5800	400
2825501221	13/16-16	1/2	1,21	30,8	1,91	48,6	1,06	27	5800	400
2825501621	1"-14	1/2	1,32	33,5	1,91	48,6	1,06	27	5800	400
2825502026	1/3-16-12	3/4	1,47	37,5	2,02	51,4	1,18	30	4785	330
2825502533	1-7/16-12	1	1,63	41,5	2,30	58,4	1,41	36	4785	330
2825503242	1-11/16	1-1/4	1,75	44,5	2,39	60,9	1,61	41	3625	250
2825503848	2"-12	1-1/2	1,93	49	2,54	64,7	1,89	48	3625	250